



# CINCINNATI MINE MACHINERY Co.

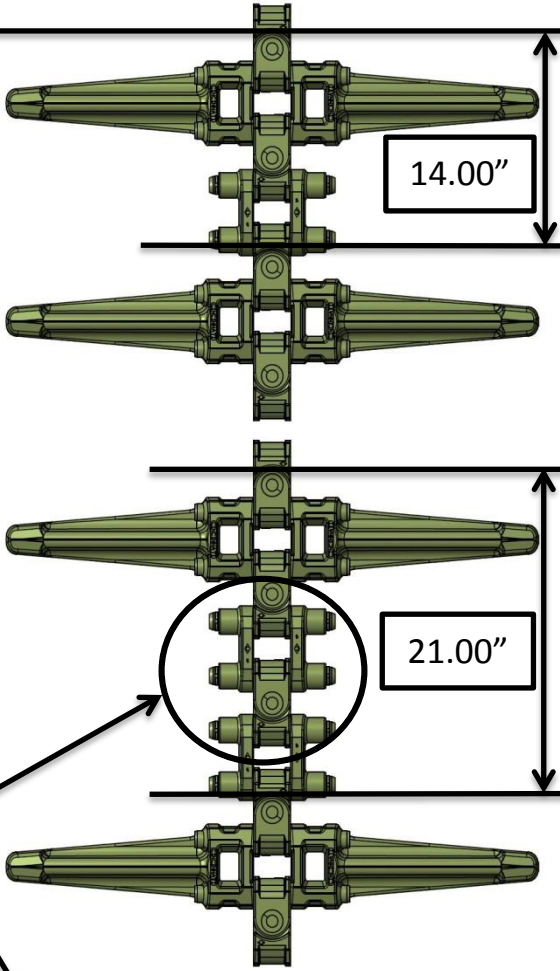
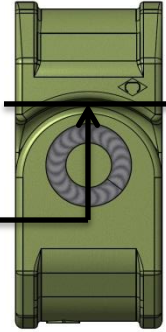
## DA-350 CONVEYOR CHAINS

### CHAIN UNIT MEASUREMENT METHOD



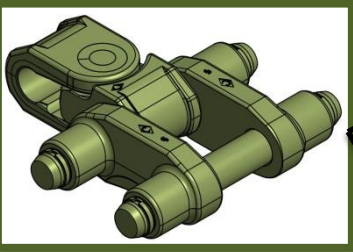
**CHAIN MUST BE PROPERLY TENSIONED BEFORE MEASURING FOR BEST RESULTS**

HOOK TAPE MEASURE TO FRONT EDGE OF CONNECTOR AS SHOWN AND MEASURE TO THE SAME POINT ON THE CONNECTOR IN THE FOLLOWING UNIT



**DA-3502 CHAINS**  
NEW CHAIN = 14.00"  
CONSIDER REPLACING = 14.75"

**DA-350 CHAINS**  
NEW CHAIN = 21.00"  
CONSIDER REPLACING = 22.00"



AN EXTRA CHAIN SECTION MIGHT BE NECESSARY AT INSTALLATION TO GET A PROPER FIT FOR CORRECT TENSIONING. THIS WOULD ALSO BE THE FIRST COMPONENT TO REMOVE WHEN SHORTENING THE CHAIN.  
(PART#: C-14909)

Visit [www.cinmine.com](http://www.cinmine.com) For More Information

CONTACT US: THE CINCINNATI MINE MACHINERY Co. 800-543-4607 OR VISIT OUR WEBSITE AT [CINMINE.COM](http://CINMINE.COM) FOR MORE INFORMATION

\*CHAIN WIDTHS OTHER THAN THOSE LISTED ARE AVAILABLE UPON REQUEST

DA-3502 CONVEYOR CHAIN SELECTION CHART				DA-350 SIDE STRAP ASSEMBLY				DA-350 CONVEYOR CHAIN SELECTION CHART			
MODEL NO.	A - WIDTH	CHAIN UNIT	FLIGHT SECTION	C-14753				MODEL NO.	B - WIDTH	CHAIN UNIT	FLIGHT SECTION
DA-3502	27-1/2	C-14850	C-14849	C-14676				DA-350	27-1/2	C-15097	C-14849
DA-3502-A	36-1/8	C-14885	C-14884	C-14679							
DA-3502-L	33-1/2	C-14828	C-14827	C-14678							
DA-3502-VA	29	C-14885	C-14884	CONNECTING PIN							
				C-14676							
				C-14679							
				C-14678							
				RETAINING RING							
				SIDE STRAP							
				CONNECTING PIN							



# DA-350 CONVEYOR CHAIN: 3-1/2" PITCH

